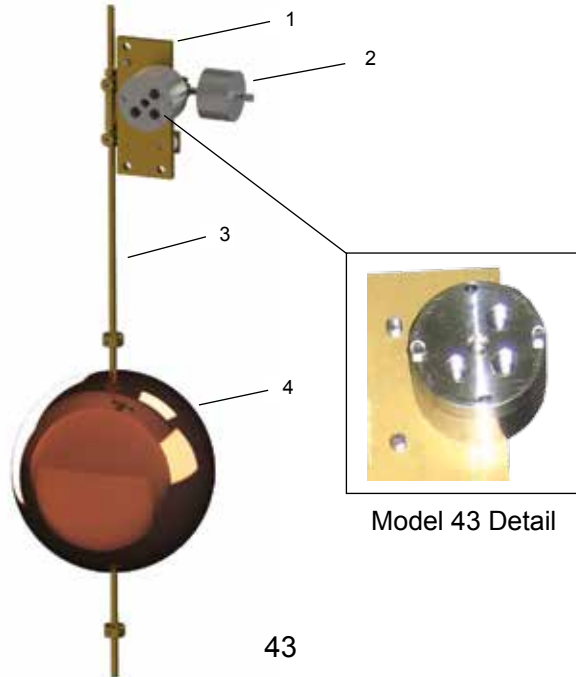


# Model 43 Rotary Float Pilot (On/Off)



1. Mounting Bracket (Brass)
2. Counter Weight (Stainless Steel)
3. Float Rod (Brass)
4. Float (Copper)

**Standard Materials:** SST pilot, inner valve, copper float, 4 ft / 1.2 m brass rod.

## Product Overview

The 43 stainless steel float actuated pilot with non-modulating rotary motion, provides non-modulating On-Off operation of the main valve. It has higher capacity and faster response time than other non-modulating float pilots. The differential between the level where the main valve opens and the level where the main valve closes, is adjustable. The 43 pilot allows for faster operation of the main valve over traditional float pilots, due to increased port size. The standard configuration is for the pilot to close the main valve on high level and open the main valve on low level. The 43 pilot is used on all non-modulating model F-Type 5, 106 and 206 series float valves.

The 43 pilot has a higher pressure rating 150 psi / 10.35 bar as compared to Model 39 (80 psi / 5.5 bar).

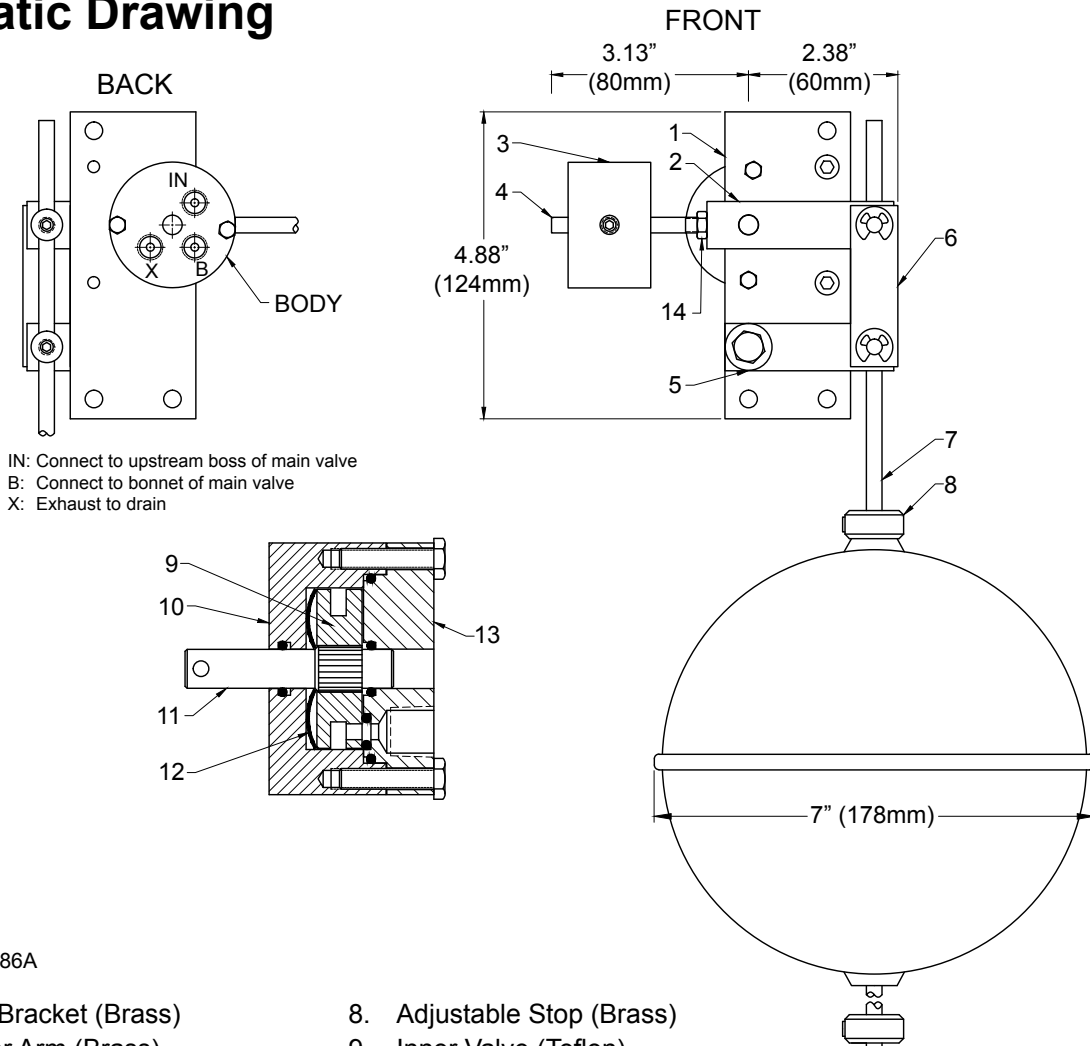
## Specifications

The pilot shall be a Singer Model 43.

- The pilot shall be non-modulating and made of 316 stainless steel construction.
- The inner valve shall utilize Buna-N seals to provide drip-tight shut-off in the valve body.
- The pilot shall include a 4 ft / 1.2 m brass float rod with adjustable stops and a copper float (alternate lengths of float rod are available).
- The pilot shall close the main valve on rising water level (standard configuration).
- Maximum working temperature: 180° F / 82° C
- Maximum working pressure: 150 psi / 10.35 bar
- $C_v$  flow coefficient is 0.21
- Can be utilized as part of sump ejector assembly

# Model 43 Rotary Float Pilot (On/Off)

## Schematic Drawing



SCHEMATIC A0986A

- |  |  |
|--|--|
| 1. Mounting Bracket (Brass)            | 8. Adjustable Stop (Brass)               |
| 2. Main Lever Arm (Brass)              | 9. Inner Valve (Teflon)                  |
| 3. Counterweight (Stainless Steel)     | 10. Casing (Stainless Steel)             |
| 4. Counterweight Rod (Stainless Steel) | 11. Stem (Stainless Steel)               |
| 5. Lower Lever Arm (Brass)             | 12. Wave Spring Washer (Stainless Steel) |
| 6. Space Bar (Brass)                   | 13. Body (Stainless Steel)               |
| 7. Float Rod (Brass)                   | 14. Lock Nut (Stainless Steel)           |

## Ordering Instructions

Refer to page 293 for the order form and ordering instructions.